

Welcome to Fisherman's Landing!!

Our one, two and three bedroom apartment homes are beautifully enhanced by lush tropical landscaping that adorns our community. The enormous screened patio/balconies that accompany all of our apartment homes allow you to further enjoy the tranquil nature setting.

With our five floorplans to choose from, there is a home to suit everyone's needs. Whether you enjoy an upper level home with cathedral ceilings or a nice wood burning fireplace, we can accommodate your needs.

There's plenty of neighborly fun and relaxation at the clubhouse, Swimming Pool/Whirlpool and Fitness Center. You'll also find lighted tennis courts, racquetball and more. Enjoy yourself knowing that our professionally trained management and service teams are looking after it all for you.

We think you'll agree Fisherman's Landing is the apartment home you've been looking for.

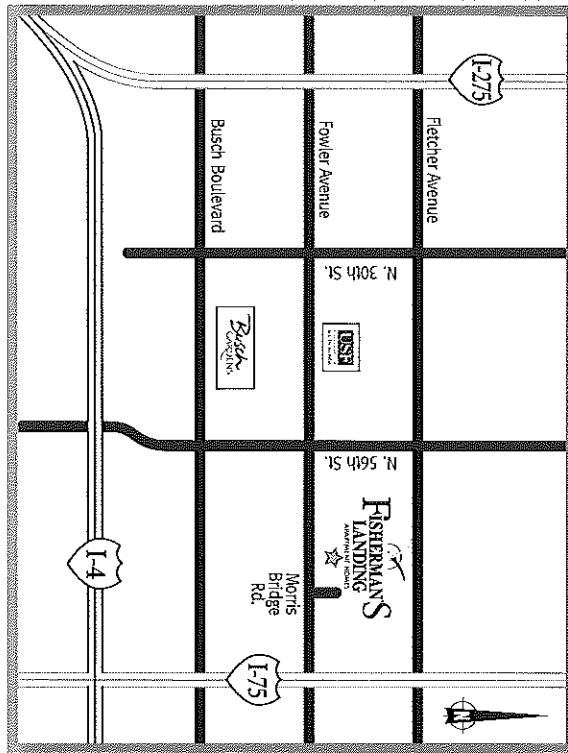
We are conveniently located to Interstate 75, minutes from University of South Florida, University Mall, and within walking distance from Temple Terrace Park as well as many more nearby conveniences



FISHERMAN'S LANDING



Tampa, Florida



Directions: From I-275, exit east on Fowler Avenue, travel past 56th Street (approximately 1.5 miles), turn left on Morris Bridge Road. From Interstate I-75, exit west on Fowler Avenue and turn right on Morris Bridge Road.

**FISHERMAN'S
LANDING**

P: 813.989.0586

F: 813.988.5581

fishermans@resimgt.com



Monthly Rent:	\$
Security Deposit:	
Application Fee:	
Pet Fee:	
Administrative Fee:	
Util. Reimbursement:	
Other:	
Total Due:	

8900 Fisherman's Point Rd.
Temple Terrace, Florida 33637

*From the very first day...
...you're at home!!*

Fisherman's Landing is a welcome retreat where you can unwind after a busy day. Enjoy our peaceful setting amongst a 75 acre wooded conservation site nestled on the Hillsborough River.

Apartment Features

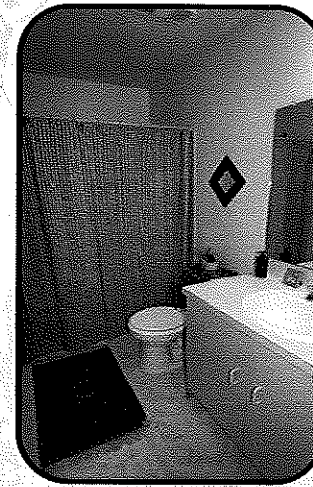
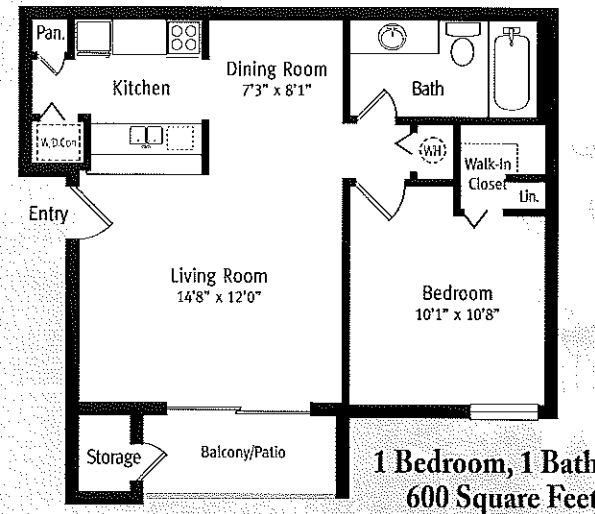
- 1, 2 & 3 Bedroom Apartment Homes
 - Washer/Dryer Connections
 - Frost-Free Refrigerator with Ice Maker *
 - Pantry in Kitchen
 - Dishwasher & Disposal
 - Cathedral Ceilings *
 - Fireplace *
 - Ceiling Fan in living area
 - Bookshelves in living & dining area
 - Walk-in Closets
 - Screened Balconies and Patios
 - Outside Storage *
- * in select apartments*

Community Privileges

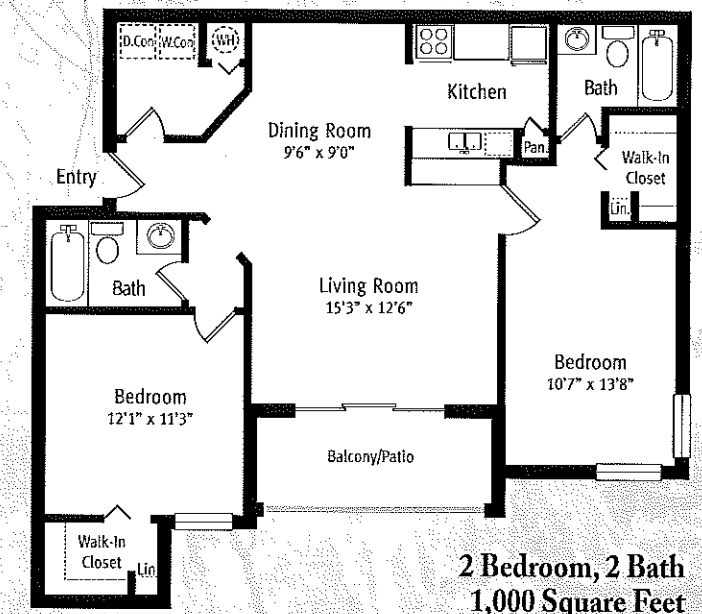
- Beautiful Clubhouse
- Swimming Pool with Whirlpool
- Tot Lot
- Hillsborough River Frontage
- Pond with Ducks and Turtles
- Canoe and Boat Storage
- Car Wash Area with Vacuum
- Clothes Care Center
- Lighted Tennis Court
- Racquetball Court
- Pet Friendly (*some restrictions apply*)



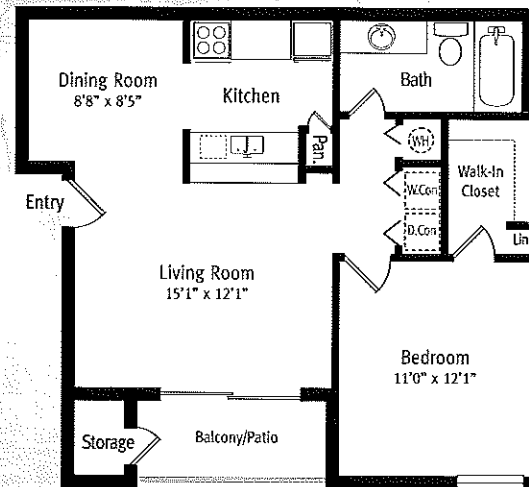
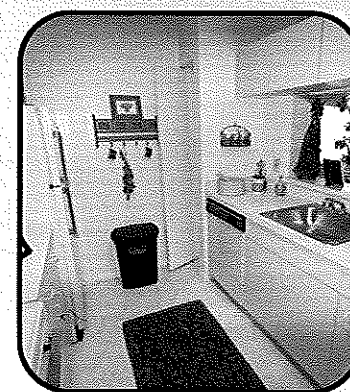
THE MARLIN



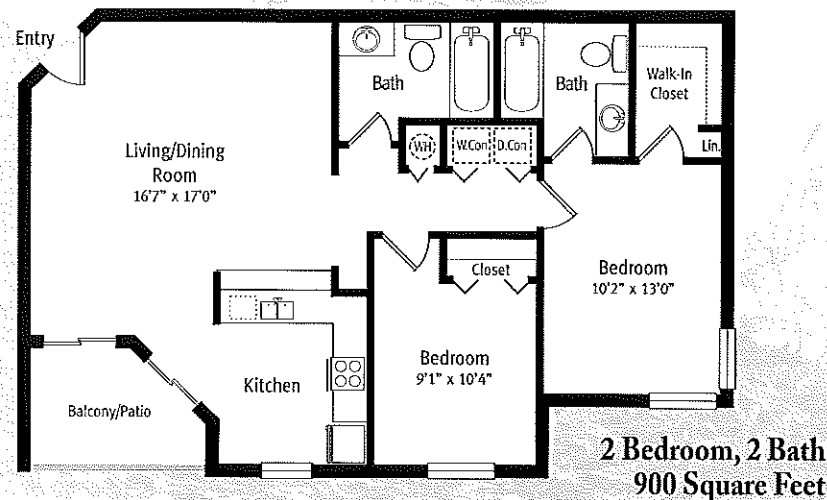
THE JAGUAR



THE DOLPHIN



THE DEVIL RAY



THE BUCCANEER

